



PRODUCTION:

Spring Repertory
March 18, 2009

DMinor Sonata
The Time
Sarasate

VENUE INFORMATION:

**BASS
Performance
HALL**
330 East 4th Street
FORT WORTH, TX 76102

VENUE CONTACT:

Steven P. Truitt
817-810-9295

CLIENT:

Metropolitan Classical Ballet

This is a representation of design concepts only. Tony Tucci takes no responsibility and hereby disclaims liability for any injury resulting from the implementation of these concepts. All work indicated by this drawing must be done in compliance with all applicable federal, state and local fire, safety and electrical codes. The lighting designer and his staff are responsible for visual design of the lighting and are not responsible for structural or electrical accidents resulting in injury or damage. All concepts, ideas, and design elements shown on this drawing and all other documentation or related materials are the property of Tony Tucci and may only be used for this production. The resultant design may not be reproduced without written approval by Tony Tucci.

DIRECTOR:

STAGE MANAGER:

Debbie Barr

TD:

Paul Cathey

HDT:

Steve Truitt

HME:

Richard Barlow

ASSISTANT LD:

Chad R. Jung

Aaron Lentz

MASTER ELECTRICIAN:

Peggy Mitchell

FILE NAME:

MCB Light Plot March 09

Drawn By:

Chad R. Jung
Aaron Lentz

DATE OF DRAWING:

3-10-09

DRAWING:

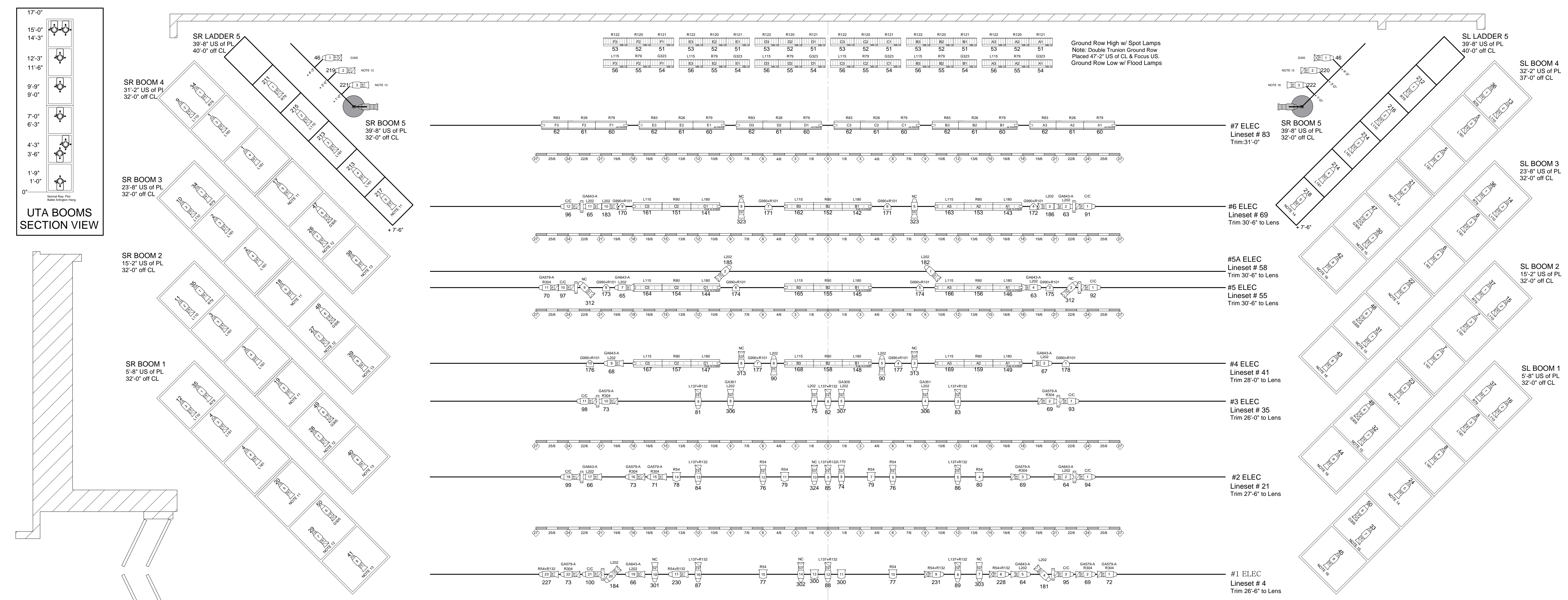
Light Plot

SCALE:

1/4" = 1'-0"

SHEET:

1 OF 1



LINE	PL	TRIM	ITEMS
1	312	30"	1
2	312	30"	1
3	312	30"	1
4	312	30"	1
5	312	30"	1
6	312	30"	1
7	312	30"	1
8	312	30"	1
9	312	30"	1
10	312	30"	1
11	312	30"	1
12	312	30"	1
13	312	30"	1
14	312	30"	1
15	312	30"	1
16	312	30"	1
17	312	30"	1
18	312	30"	1
19	312	30"	1
20	312	30"	1
21	312	30"	1
22	312	30"	1
23	312	30"	1
24	312	30"	1
25	312	30"	1
26	312	30"	1
27	312	30"	1
28	312	30"	1
29	312	30"	1
30	312	30"	1
31	312	30"	1
32	312	30"	1
33	312	30"	1
34	312	30"	1
35	312	30"	1
36	312	30"	1
37	312	30"	1
38	312	30"	1
39	312	30"	1
40	312	30"	1
41	312	30"	1
42	312	30"	1
43	312	30"	1
44	312	30"	1
45	312	30"	1
46	312	30"	1
47	312	30"	1
48	312	30"	1
49	312	30"	1
50	312	30"	1
51	312	30"	1
52	312	30"	1
53	312	30"	1
54	312	30"	1
55	312	30"	1
56	312	30"	1
57	312	30"	1
58	312	30"	1
59	312	30"	1
60	312	30"	1
61	312	30"	1
62	312	30"	1
63	312	30"	1
64	312	30"	1
65	312	30"	1
66	312	30"	1
67	312	30"	1
68	312	30"	1
69	312	30"	1
70	312	30"	1
71	312	30"	1
72	312	30"	1
73	312	30"	1
74	312	30"	1
75	312	30"	1
76	312	30"	1
77	312	30"	1
78	312	30"	1
79	312	30"	1
80	312	30"	1
81	312	30"	1
82	312	30"	1
83	312	30"	1
84	312	30"	1
85	312	30"	1
86	312	30"	1
87	312	30"	1
88	312	30"	1
89	312	30"	1
90	312	30"	1
91	312	30"	1
92	312	30"	1
93	312	30"	1
94	312	30"	1
95	312	30"	1
96	312	30"	1
97	312	30"	1
98	312	30"	1
99	312	30"	1
100	312	30"	1
101	312	30"	1
102	312	30"	1
103	312	30"	1
104	312	30"	1
105	312	30"	1
106	312	30"	1
107	312	30"	1
108	312	30"	1
109	312	30"	1
110	312	30"	1
111	312	30"	1
112	312	30"	1
113	312	30"	1
114	312	30"	1
115	312	30"	1
116	312	30"	1
117	312	30"	1
118	312	30"	1
119	312	30"	1
120	312	30"	1
121	312	30"	1
122	312	30"	1
123	312	30"	1
124	312	30"	1
125	312	30"	1
126	312	30"	1
127	312	30"	1
128	312	30"	1
129	312	30"	1
130	312	30"	1
131	312	30"	1
132	312	30"	1
133	312	30"	1
134	312	30"	1
135	312	30"	1
136	312	30"	1
137	312	30"	1
138	312	30"	1
139	312	30"	1
140	312	30"	1
141	312	30"	1
142	312	30"	1
143	312	30"	1
144	312	30"	1
145	312	30"	1
146	312	30"	1
147	312	30"	1
148	312	30"	1
149	312	30"	1
150	312	30"	1
151	312	30"	1
152	312	30"	1
153	312	30"	1
154	312	30"	1
155	312	30"	1
156	312	30"	1
157	312	30"	1
158	312	30"	1
159	312	30"	1
160	312	30"	1
161	312	30"	1
162	312	30"	1
163	312	30"	1
164	312	30"	1
165	312	30"	1
166	312	30"	1
167	312	30"	1
168	312	30"	1
169	312	30"	1
170	312	30"	1
171	312	30"	1
172	312	30"	1
173	312	30"	1
174	312	30"	1
175	312	30"	1
176	312	30"	1
177	312	30"	1
178	312	30"	1
179	312	30"	1
180	312	30"	1
181	312	30"	1
182	312	30"	1
183	312	30"	1
184	312	30"	1
185	312	30"	1
186	312	30"	1
187	312	30"	1
188	312	30"	1
189	312	30"	1
190	312	30"	1
191	312	30"	1
192	312	30"	1
193	312	30"	1
194	312	30"	1
195	312	30"	1
196	312	30"	1
197	312	30"	1
198	312	30"	1
199	312	30"	1
200	312	30"	1

